

**Effortless efficiency and savings.
The easy choice for radiator controllers.**

TheraPro HR90





Everything at a glance – cost savings, convenience and design

A new angle on home heating

The TheraPro HR90 radiator controller comes with a backlit, adjustable screen that gives you a clear view of temperature and other settings. The controller will regulate the ambient temperature at the ideal level for the homeowner, or it can be programmed to match the homeowner's schedule. No matter what, it's the right temperature at the right time, all the time. The TheraPro HR90 offers thoughtful, intuitive operation and can help homeowners maximize energy savings.



Adjustable display

ECO saver mode

Convenient programming

User-friendly

Adjustable display

The flip-up display can be easily read in nearly any location, even hard to reach locations such as under a window sill.

Temperature limits

Minimum and maximum temperature limits can be set to help control energy consumption.

Easy programming

The TheraPro HR90 radiator controller can be removed for easy programming.

Frost-proof function

If the temperature drops below 41°F, the TheraPro HR90 radiator controller opens until the temperature rises to 43°F again, and can prevent the radiator from freezing.

Child/Safety lock

The TheraPro HR90 radiator controller can be locked to prevent unauthorized access.

ECO saver mode

In ECO saver mode, the ambient temperature is lowered by 5°F.

Save heating costs easily

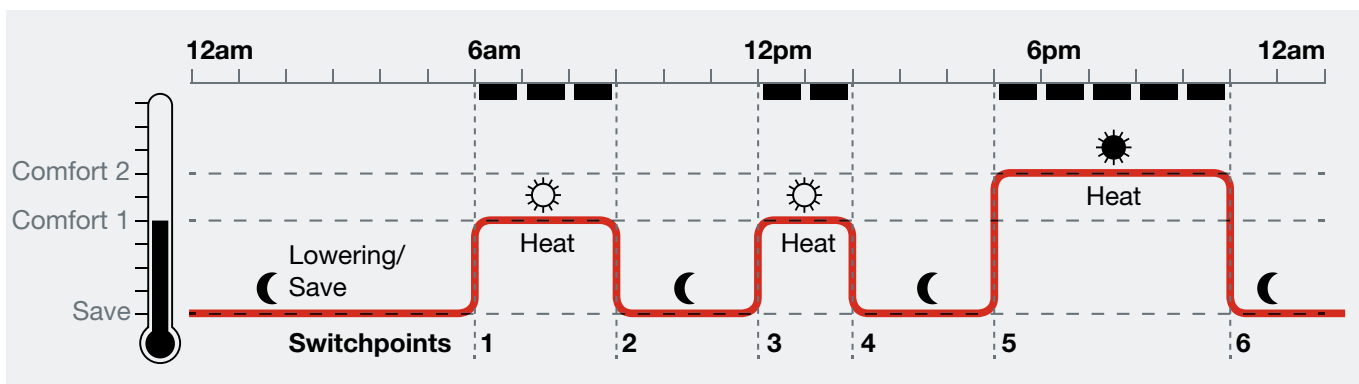
The TheraPro HR90 radiator controller helps keep heating costs under control. It automatically regulates the heating valve via electronic time programs and can be programmed according to a daily routine.

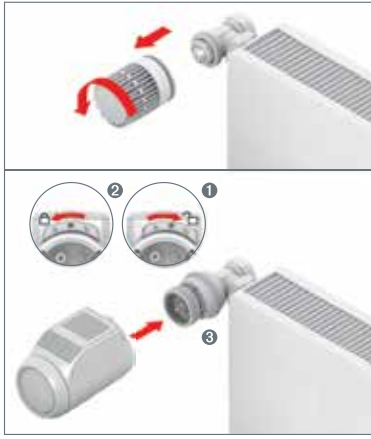
Additional operating modes

Easily set different operating modes, such as "Dinner Party", "Game Night" and "Vacation".

Convenient programming

Up to six switchpoints can be set per day and three different temperatures (7 days a week).





Easy to install

The TheraPro HR90 radiator controller can be easily installed on all standard radiator valves with an M30 x 1.5 connection, without causing any soiling or water stains. Ready to go in a few steps:

- Insert battery
- Set language, time and date
- Remove old thermostat cap
- Mount adapter if necessary
- Mount valve attachment
- Mount TheraPro HR90

Preset time programs

Once installed, the TheraPro HR90 radiator controller operates immediately with the default settings. You can change them easily to suit your needs.

Copying time programs

It's easy to program multiple thermostats to run on the same schedule. Simply program the schedule into one thermostat, and transfer, via cable, to any additional thermostats in the home.

The Honeywell ACC90 cable must be used to copy programs; use of any other cable will damage the device.

Technical data	TheraPro HR90
Applications	Hot water or steam systems
Protection class	IP30
Supply voltage (batteries included, life span approximately two years)	Battery type LR6, AA, AM3 Alkaline: 2 x 1.5 V Lithium: 2 x 1.5 V NiMH: 2 x 1.2 V
Connection to the radiator valve	Fits most standard radiator valves M30 x 1.5
Ambient temperature	32–122 °F
Dimensions	3.77 x 2.12 x 2.36 inches
Humidity	10 ... 90% relative humidity

Home and Building Technologies

In the U.S.:
Honeywell
1985 Douglas Drive North
Golden Valley, MN 55422-3992

www.honeywell.com

03-00209 DI
March 2017
© 2017 Honeywell International Inc.

Honeywell